

Pneumatic Test Probe
Installation Height: 5,5 mm (.217)
Recommended Stroke: 6,0 mm (.236)

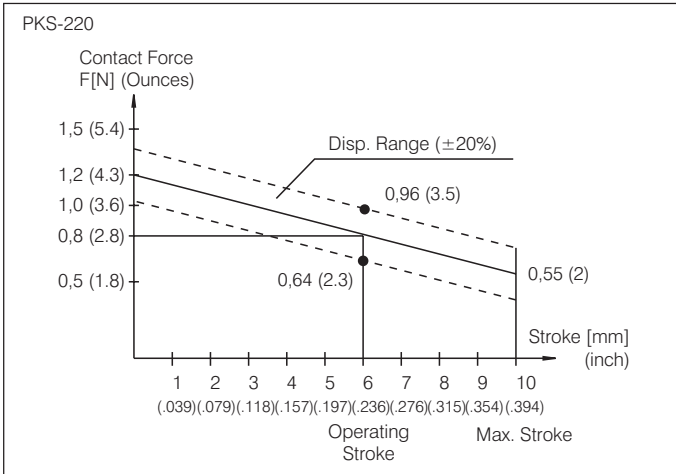
Grid:
 $\geq 2,54$ mm
 ≥ 100 Mil

PKS 220

Available Tip Styles

Material	Tip Style	Standard Plating	Special Versions	
			Ø	Øinch
2	01 **	R	Ø 1,50 (.059)	
3	03	R	Ø 2,00 (.079)	
2	04 *	R	Ø 1,30 (.051)	
2	05 ***	A	Ø 1,00 (.039)	
2	06	A	Ø 2,50 (.098)	2,00 R (.079)
2	07	R	Ø 2,00 (.079)	
2	91 ****	N	Ø 1,00 (.039)	

Collar Dia.: *=2,00 mm (.079), **=1,50 mm (.059), ***=1,30 mm (.051), ****=1,20 mm (.047)

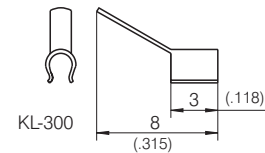
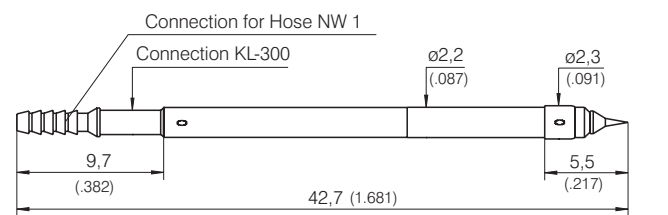
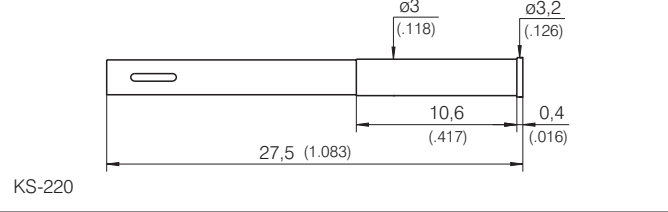
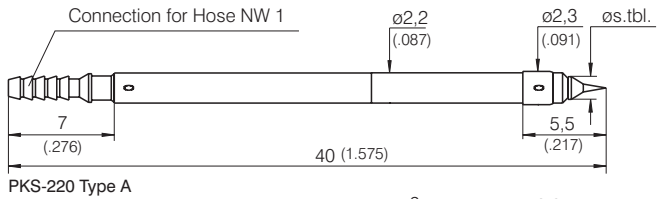


Note:

The assembly in Grid 2,54 mm (100 mil) is only possible up to a double row, and then only without use of Receptacles and KL-300. The Receptacle and KL-300 can be used from Grid 3,5 mm (140 Mil) up.

Pneumatic Accessories and general Instructions > see P. 66/67.

Mounting and Functional Dimensions



Mechanical Data

Working Stroke: 6,0 mm (.236)
 Maximum Stroke: 10,0 mm (.394)
 Contact Force at Work. Stroke: 0,8 N (2.9oz)
 Operating Medium: Compressed Air (filtered, oil-free)
 Operating Pressure: 6 bar (86 psi)

Electrical Data

Current Rating: 2-3 A
 R_i typical: 30 mΩ

Mounting Hole Size

with Receptacle: Ø 2,98 - 2,99 mm (.1173 - .1177)
 without Receptacle: Ø 2,20 mm (.0866)

Materials

Plunger: Steel or BeCu, rhodium-, gold- or nickel-plated
 Barrel: Brass, gold-plated
 Restoring Spring: Steel, gold-plated
 Receptacle: Brass, gold-plated
 O-Rings: Perbunan

Warning: do not solder the cable to the crimp points of the Receptacle.

Ordering Example:

Series	Tip Material	Tip Style	Tip Diameter (1/100 mm)	Plating	Spring Force (dN)	Collar Height (mm)	Type (alternative B)
2	2 = Steel	01	150	R = Rhodium	08	02	A

Test Probe:

PKS 220 2 01 150 R 08 02 A

Receptacle with Solder Terminal for series 220:

KS - 220

Clip connection with Solder Terminal for series 220:

KL - 300

All specifications are subject to change without prior notification