

## Tip-Style 19

### Reliable contacting of round connector pins and square posts

With the tip-style 19 INGUN enhances the well-established tip-styles in the series **HSS-118/HSS-118 M** and **HSS-120/HSS-120 M** for contacting round connector pins and square posts.

The **tip-style 19** combines the advantages of the classical tip-style 03 with the inverse cone and it's arresting effect as well as the aggressiveness of the tip-style 06 with it's serrated edges. This is achieved by means of cross grooves, which offer an aggressive contacting contour. Furthermore, contamination, which is detached from the contact surfaces, can wander into the grooves.



Tip Style 19

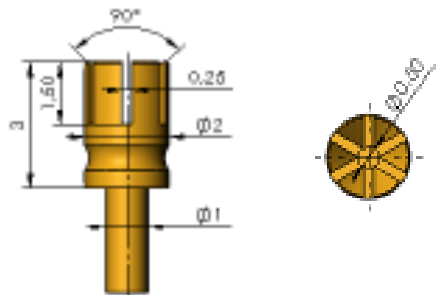
**Tip-style 19:**

- Resistant to contamination
- Aggressive contacting
- Arresting effect of the inverse cone
- Low contact resistance

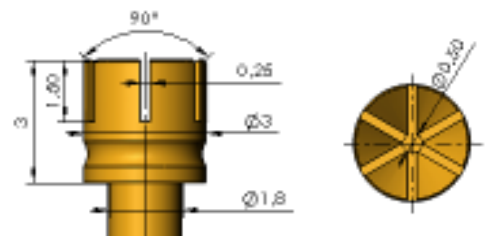
**Mechanical data:**

Series:	HSS-118/118 M	HSS-120/120 M
Current rating:	max. 16 A	max. 24 A
Recommended working stroke:	4.0 mm	
Maximum working stroke:	5.3 mm	
Spring force at working stroke:	1.5 N (optionally: 2.25 N)	
Ri typical:	< 10 mOhm	
Temperature application range:	-100°C to +200°C	
Installation height:	see catalog	

Further information see Test Probe Catalog.  
 Technical changes possible without prior notification.



HSS-118 319 200 A xxxx x



HSS-120 319 300 A xxxx x

For further information please contact us.  
 Prices and delivery on request.

**Ordering Example:**

	Series	Tip Material 3 = CuBe	Tip Style	Tip-Ø (1/100 mm)	Plating A = Gold	Spring Force (dN)	Collar-Height (mm)	Typ alternative
High-current Probe:	HSS	1 1 8	3	1 9	2 0 0	A	1 5	0 0 M

## Tip-Style 53 S

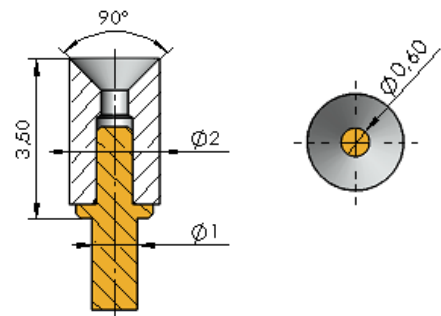
### Reliable contacting of round connector pins and square posts

With the tip-style 53 S INGUN enhances the well-established tip-styles in the series **HSS-118/HSS-118 M and HSS-120/HSS-120 M** for contacting round connector pins and square posts.

The **tip-style 53 S** turns around the previous principle of aggressive contacting with a hard tip-style on a soft test point. Posts and connector pins are often very hard and also very aggressive due to the manufacturing process of thermal severing. By means of a pressed-on silver tip, hard and aggressive posts and connector pins can now be contacted with a "soft tip-style". This enables reliable and imprint-free contacting, which is being demanded more and more in the automobile industry. To convey contamination particles away from the contacting surface an axial hole has been applied. At the same time, rest deposits, which stick to the ends of the posts and connector pins of the UUT are avoided.



Tip Style 53 S



#### Tip-style 53 S:

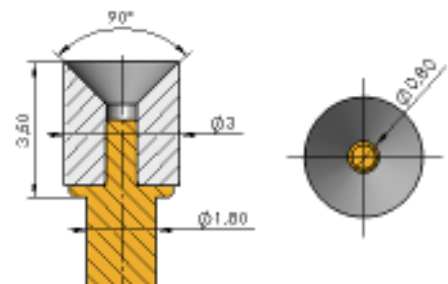
- Soft silver tip-style for aggressive posts and connector pins
- No imprints on the UUT
- Arresting effect of the inverse cone
- Resistant to contamination
- Low contact resistance

#### Mechanical data:

Series:	HSS-118/118 M	HSS-120/120 M
Current rating:	max. 16 A	max. 24 A
Recommended working stroke:	4.0 mm	
Maximum working stroke:	5.3 mm	
Spring force at working stroke:	1.5 N (optionally: 2.25 N)	
Ri typical:	< 10 mOhm	
Temperature application range:	-100°C to +200°C	
Installation height:	see catalog	

Further information see Test Probe Catalog.  
 Technical changes possible without prior notification.

HSS-118 353 200 S xxxx x



HSS-120 353 300 S xxxx x

For further information please contact us.  
 Prices and delivery on request.

Ordering Example:	Series	Tip Material 3 = CuBe	Tip Style	Tip-Ø (1/100 mm)	Plating S = Silber	Spring Force (dN)	Collar Height (mm)	Typ alternative		
High-current Probe:	HSS	1	20	3	53	300	S	15	00	M