

KT-375 HFS-HB-V-100 und KT-375 HFS-HS-V-100 Hyperbolic RF Interface Contacts

An unlimited number of advantages result from the hyperbolic-positioned contact wires on the Inner Contact (Signal) and the Outer Contact (Ground) of the coaxial contact socket, which lay around and against the Pin in lines around the complete 360° circumference.

- + Extremely low insertion and extraction forces
- + Exceptionally long life due to little wear
- + Stable electrical and mechanical characteristics during the total life of the components
- + Highest shock and vibration steadfastness

Materials:

Coax contact: Brass, CuBe, PTFE
 Plating: Gold
 Cable type: RG316U

Electrical and mechanical characteristics of the hyperbolic Coaxial Contacts

Impedance: 50 Ohm
 Frequency: DC-3 GHz
 Application temperature: - 55° C to 125°C

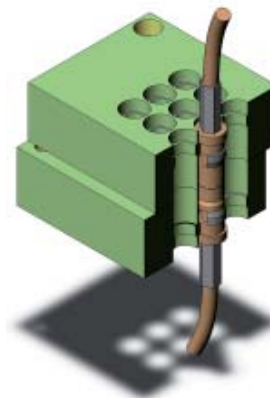
Transition resistance:
 Inner conductor (Signal): 8 mOhm max.
 Outer conductor (Ground): 2 mOhm max.
 Extraction force: 0.4 – 1.7 N max., 0.85 N on average

Number of plug-in cycles: > 25.000

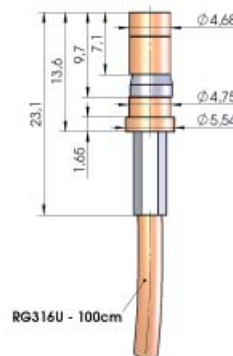
Ordering information:

Coaxial Contact Socket / Female: KT-375 HFS-HB-V-100
 Coaxial Contact Pin / Male: KT-375 HFS-HS-V-100

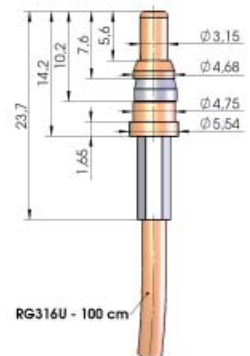
Prices and delivery times on request.
 Technical changes possible.



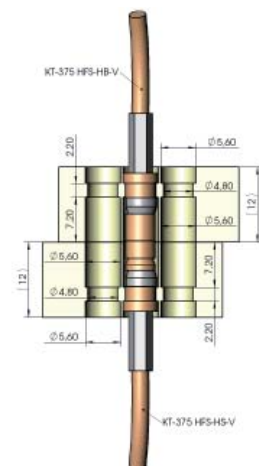
Hyperbolic Contact Wires



KT-375 HFS-HB-V-100



KT-375 HFS-HS-V-100



Example for assembly